



HAKO

Clean ahead

Assembly manual

Pre-sweep suction unit preparation (7182.55)

Introduction

Foreword

The installation procedures described in this assembly manual should only be undertaken by a Hako service centre or a workshop authorised by Hako. Members of staff with the required level of training and expertise are only guaranteed in the said workshops. This assembly manual may be used only in conjunction with the operating manual of the machine.

Safety instructions

Please observe the general safety regulations of the corresponding machine in the relevant operating manual. Place the machine on a level surface and secure it with the parking brake. Switch off the machine, unplug the battery connector and remove the key.

We would expressly advise you that no legal claims may be asserted based on the contents of this manual. In the case of necessary repair work, please make sure that only original spare parts are used. Only original spare parts guarantee constant and reliable operational readiness of your machine. We reserve the right to make changes in the interests of further technical development.

Valid as from: May 2019

Hako GmbH
23843 Bad Oldesloe, Germany
Hamburger Str. 209-239
Phone +49 4531 806-0

1 Pre-sweep suction unit preparation

1.1 Parts list

- 1 1x holder with pre-installed buffer, right
- 2 1x holder with pre-installed buffer, left
- 3 8x round-head screws M8x20
- 4 8x washers SKM-8
- 5 8x M8 nuts
- 6 1x bracket
- 7 6x washers A13
- 8 2x hex bolts M12x120
- 9 2x spacers
- 10 1x electrical connector, pre-assembled
- 11 4x cylinder-head bolts M4x10
- 12 4x washers B4.3
- 13 1x fuse insert 30 A
- 14 4x screws M3x8 (self-tapping)
- 15 1x hinged cover
- 16 2x screws M6x40 (self-tapping)
- 17 1x adapter plate
- 18 2x bushings

The following 4 positions are only needed if there are only 2 fuse holders in the machine.

- 19 2x fuse holders
- 20 2x screws M4x10
- 21 1x conductor rail
- 22 1x WS5 cable set

Not shown: W54 cable loom

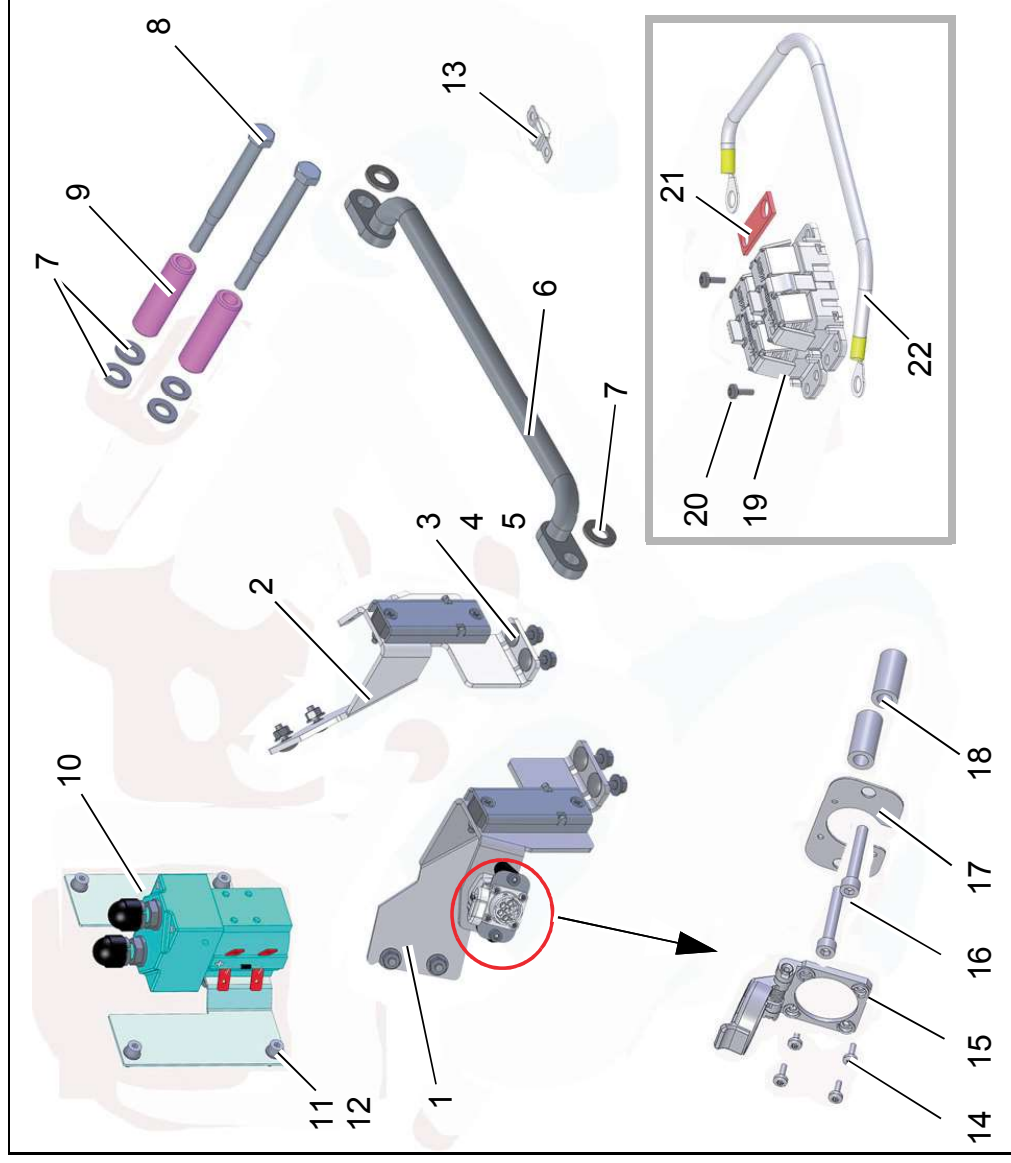


Fig. 1

Pre-sweep suction unit preparation

1.2 Bracket installation

Without overhead guard:

Fit bracket to chassis, each with M12x120 screw, spacer and three A13 washers (Fig. 2/1).

With overhead guard:

1. Undo the two screws one after the other at the front of the overhead guard (Fig. 2/2).
2. Screw bracket to holder of overhead guard using three existing washers, the A13 washer and the existing M12x120 screw (Fig. 2/3).

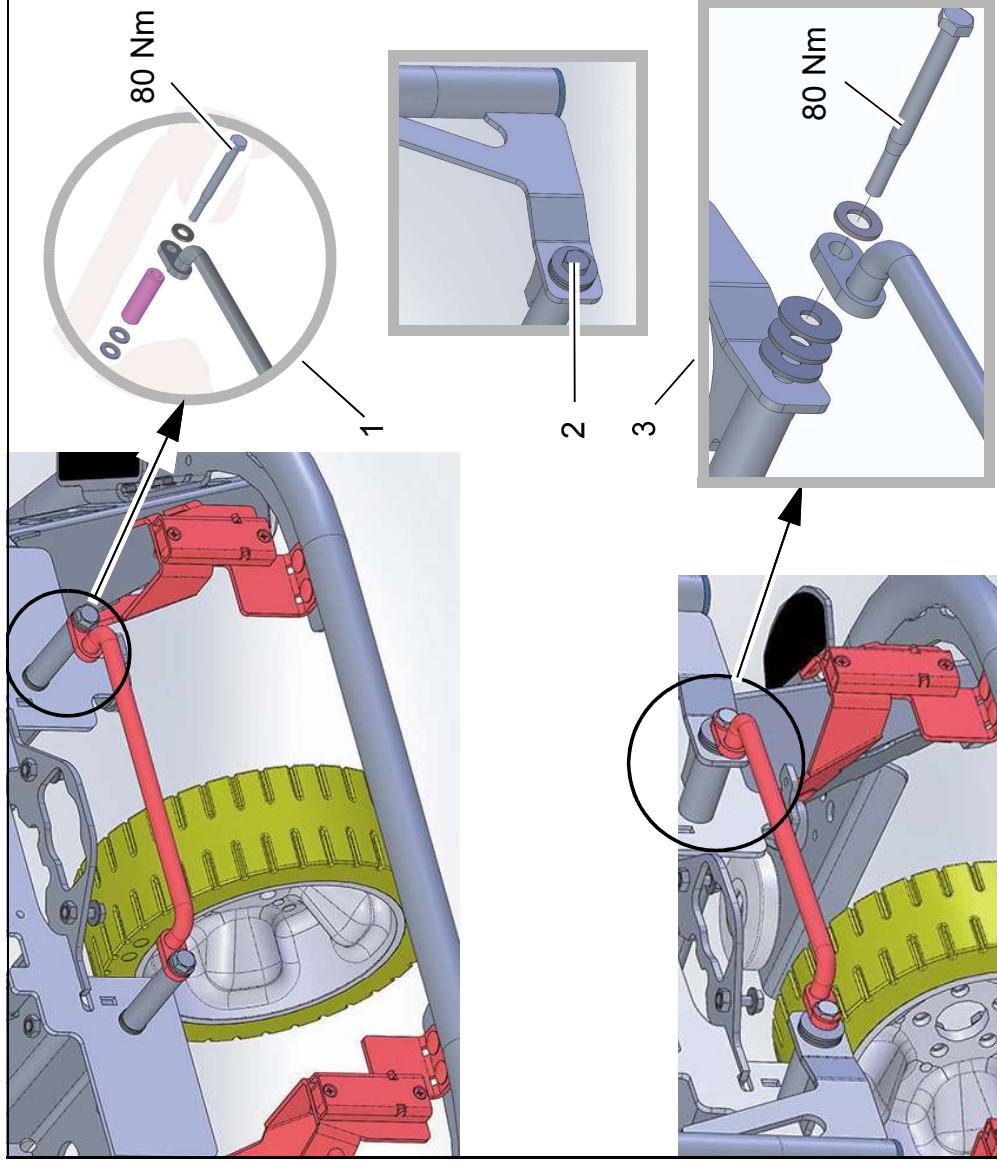


Fig. 2

- 1.3 Installation of holder with pre-installed buffer**
1. Fit left-hand holder (Fig. 3/1) with three M8x25 round-head screws, 8.4 washers and the M8 nuts to the front left of the chassis (Fig. 3/2).
 2. Fit right-hand holder to the right side of the vehicle accordingly (Fig. 3/3).

1.4 Electrical connector installation

Secure the electrical connector (Fig. 3/4) to the electronics plate with the M4x10 cylinder-head bolts and the washers.

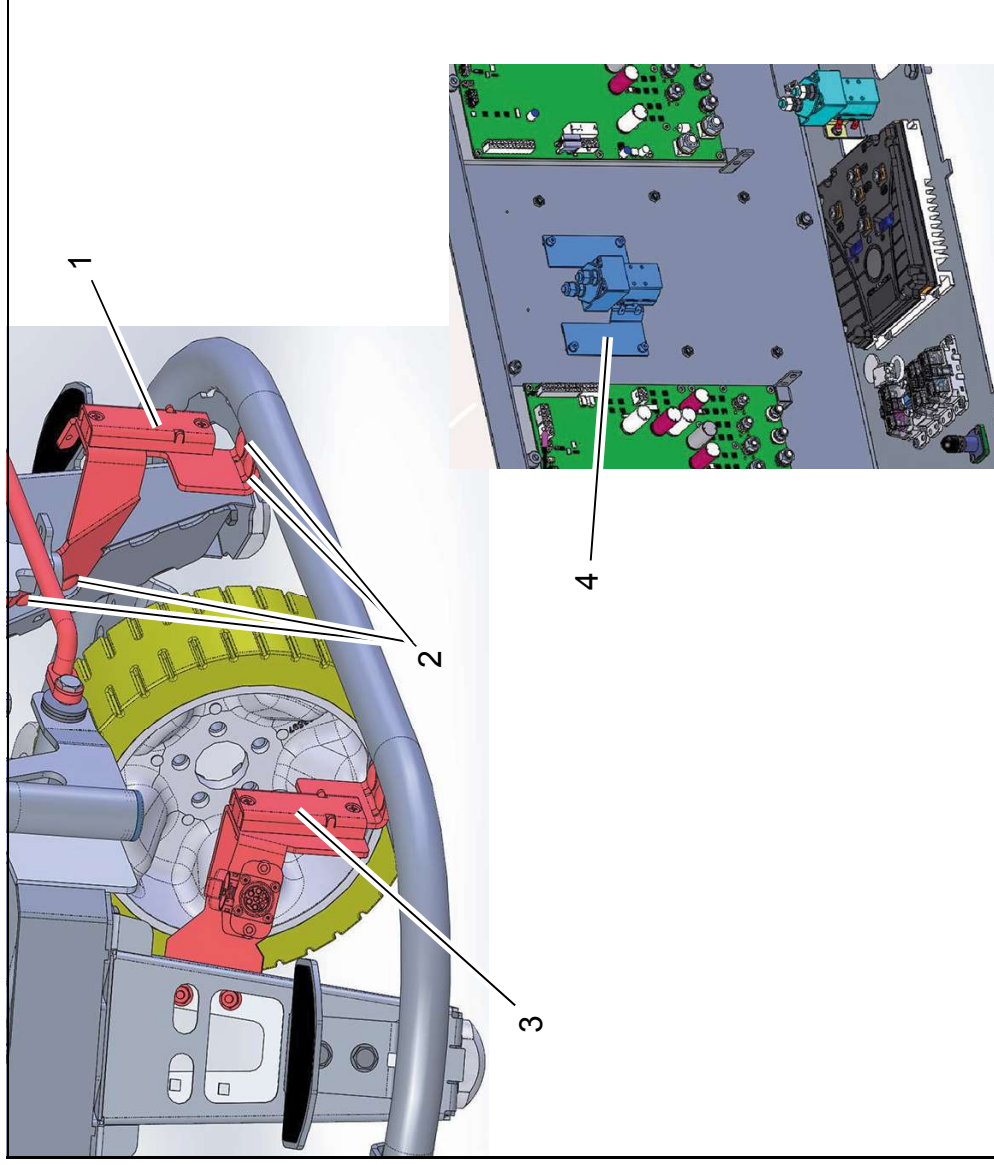


Fig. 3

Pre-sweep suction unit preparation

1.5 Installation of fuse holder and wiring set WS5

If only two fuse holders are present in the machine, the following parts must be retrofitted:

- 2x fuse holder (Fig. 4/1)
- 2x screws M4x10 (Fig. 4/2)
- 1x conductor rail (Fig. 4/3)
- 1x WS5 cable set (Fig. 4/4)

Attention!

Unless otherwise stated, tighten all nuts for electrical connection bolts to DIN 46200 (table see last page).

1. Install the two fuse holders with the two screws next to the existing fuse holders as shown.
2. Connect the connector F06/1 and F02/1 to the conductor rail.
3. Connect cable set WS5 with connector F06/1 (Fig. 4/5) and connector F02/1 (Fig. 4/6).

1.6 Fuse insert 30 A

Mount the fuse insert to the connector F05 (Fig. 4/7).

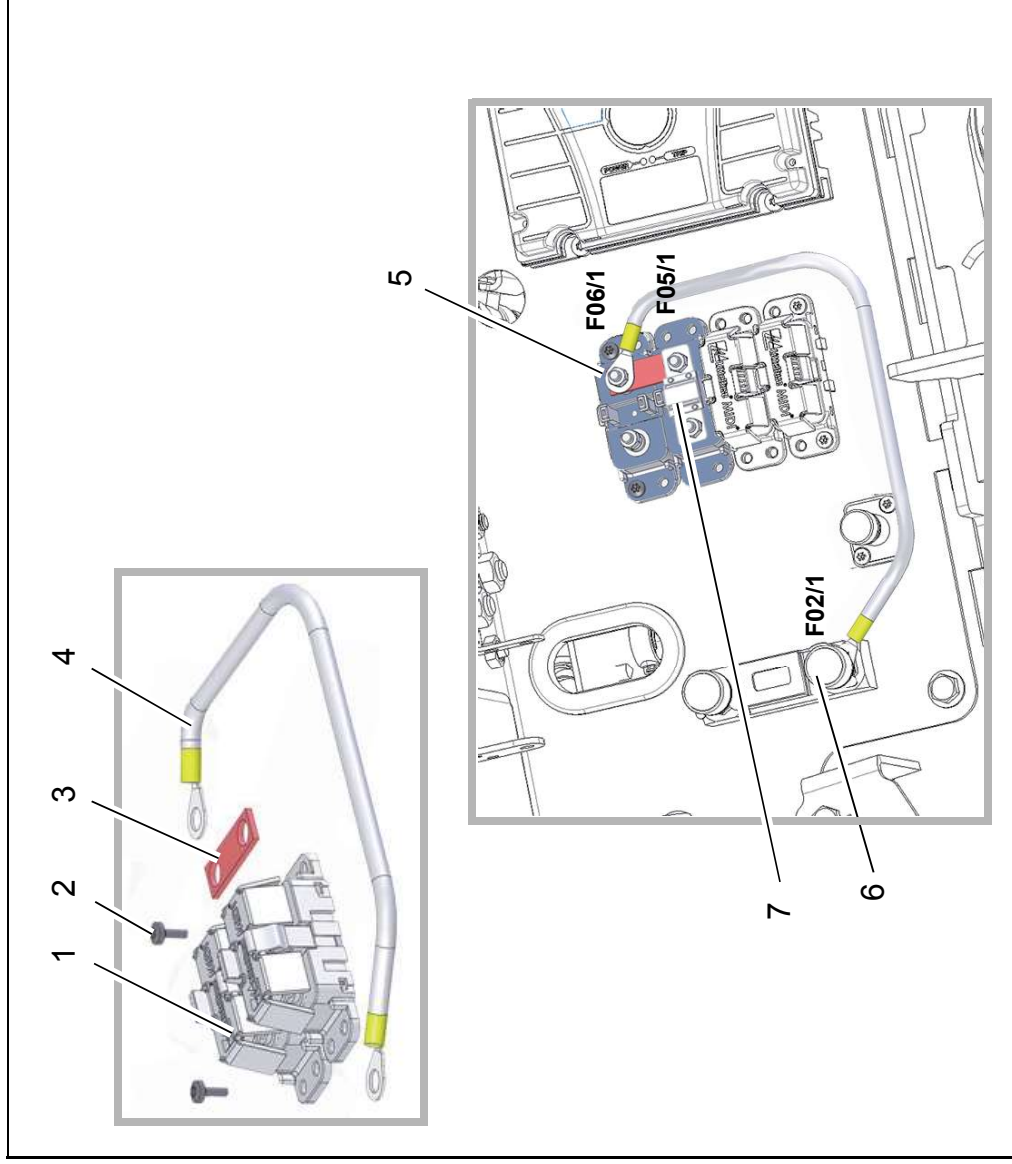


Fig. 4

1.7 Installation of cable loom W54

Attention!

Unless otherwise stated, tighten all nuts for electrical connection bolts to DIN 46200 (table see last page).

Installation with on-board charger:

1. Connect cable loom to relays K21/K/N (tightening torque 9 Nm), K21/K/P (tightening torque 9 Nm), K21/A/P and K21/A/N (Fig. 5/1).
2. Attach 12-pin connector X28 to the connector of the same name of cable loom W3 (Fig. 5/2).
3. Attach 2-pin connector X23 to the connector of the same name of cable loom W3 (Fig. 5/3).
4. Make connection to single terminal X43 (Fig. 5/4).
5. Make connection to fuse F05/2 (Fig. 5/5).
6. Lead cable loom to right-hand support foot of the machine as shown in the illustration (Fig. 5/6).

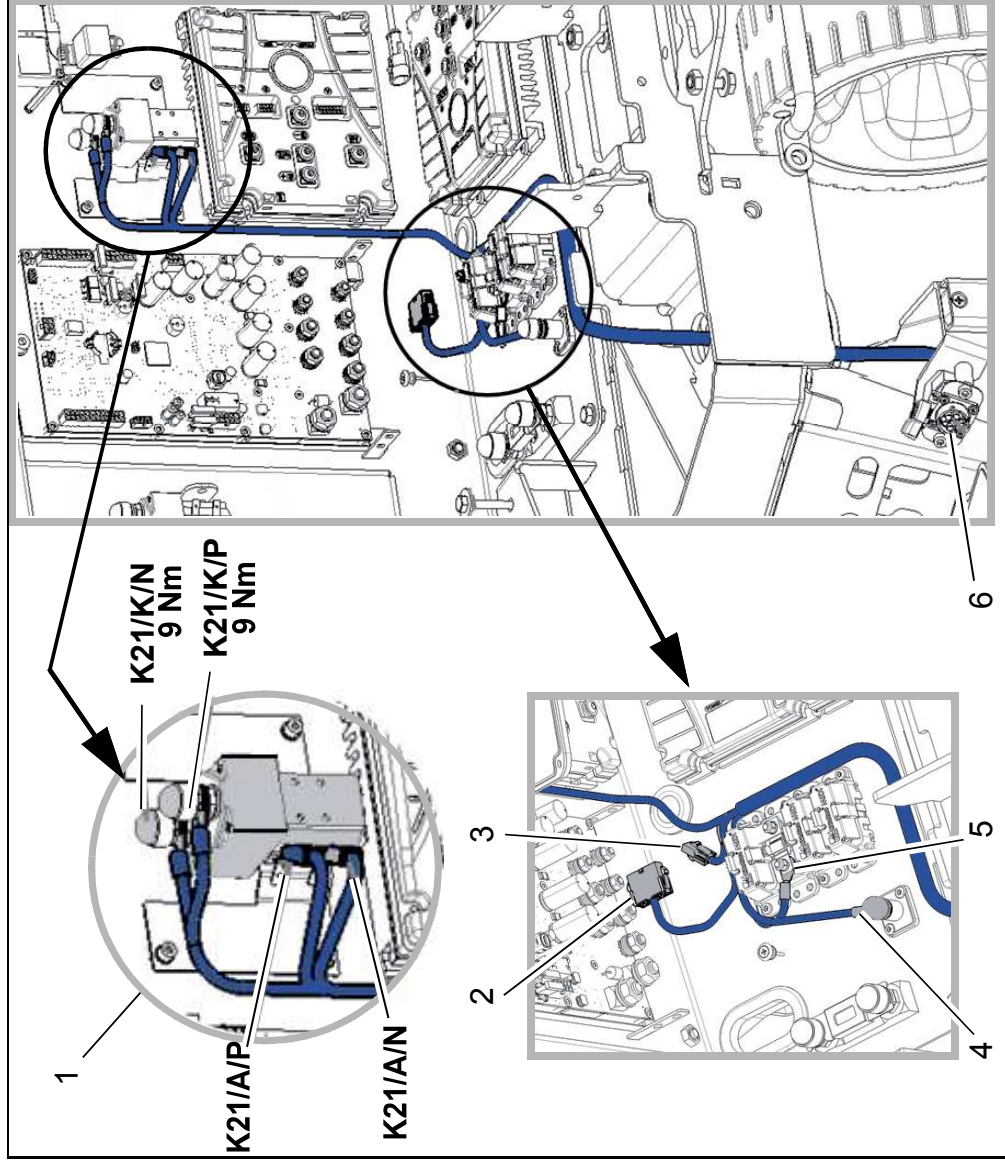


Fig. 5

Pre-sweep suction unit preparation

1.8 Make connection to right-hand holder

1. Pass the bushing X51 of the cable loom W54 through the opening of the right-hand holder (Fig. 6/1).
2. Unscrew bushing from corrugated hose, and place adapter plate (Fig. 6/2) between them. Screw corrugated hose to bushing again.
3. Screw hinged cover (Fig. 6/3), bushing and adapter plate together with four self-tapping screws M3x8 (Fig. 6/4).
4. Screw pre-assembled part to the right-hand holder with the two bushings (Fig. 6/5) and the two self-tapping screws M6x40 (Fig. 6/6).

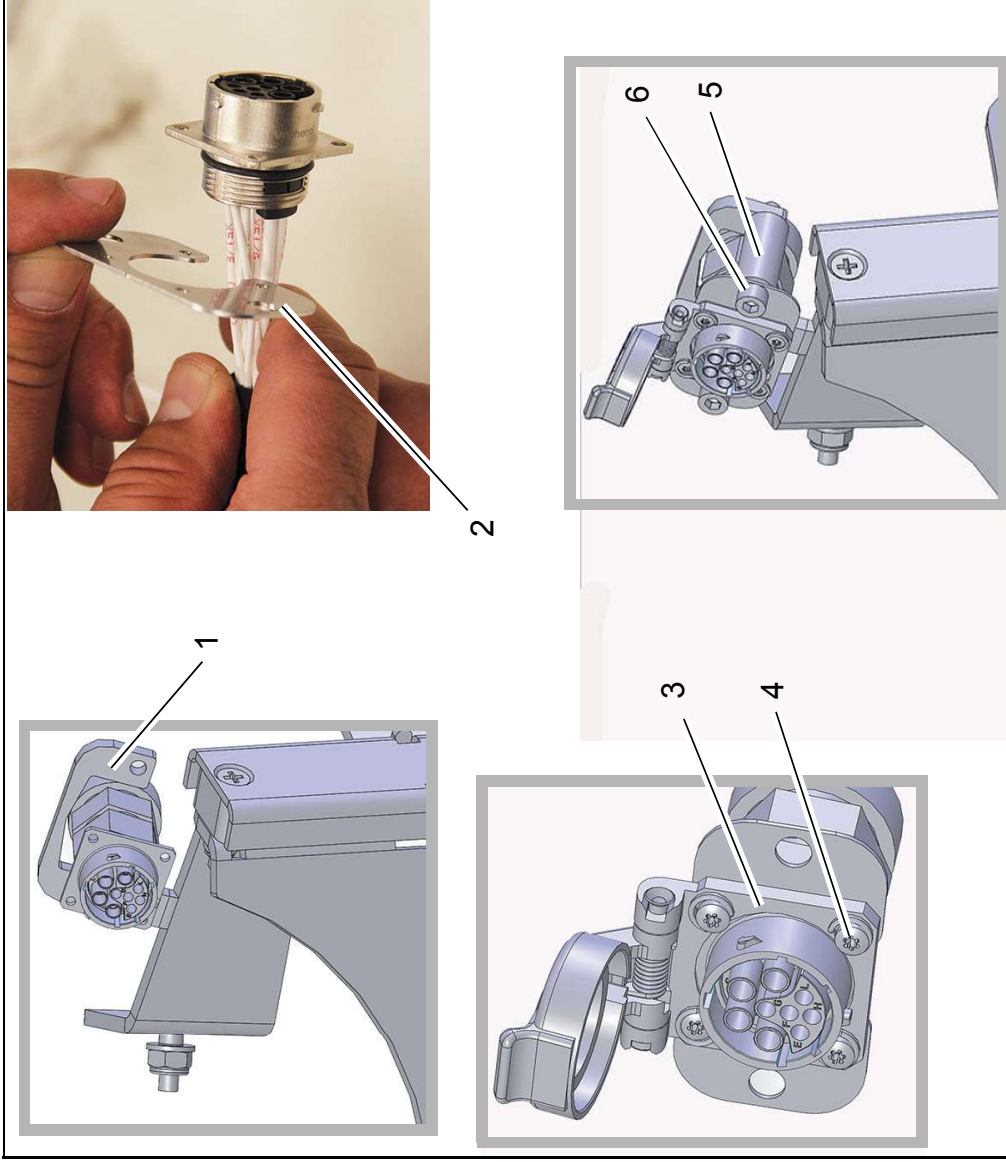


Fig. 6

Pre-sweep suction unit preparation

1.9 Setting in the configuration menu

The Pre-sweep suction unit preparation option must be activated via the configuration menu.

Option	Value
Pre-sweep suction unit preparation	1. 4. 1.

Requirements:

- Batteries inserted
- 4-digit code or diagnosis plug 97097737 present

If diagnosis plug is used:
Plug diagnosis plug into slot X20 of controller A1 (Fig. 7/1).

Setting:

1. Turn on the machine.
2. Select the arrow soft key (Fig. 7/3) on the control panel using the turn-push knob (Fig. 7/2) and press to access the sub-menu.
3. Select the configuration menu in the sub-menu (Fig. 7/4).

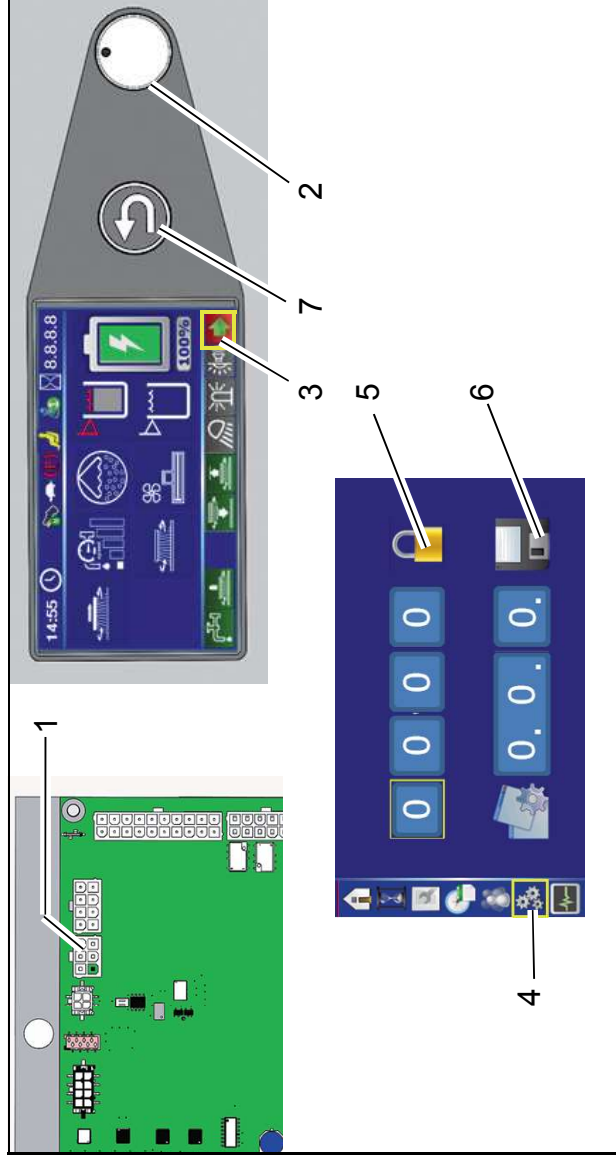


Fig. 7

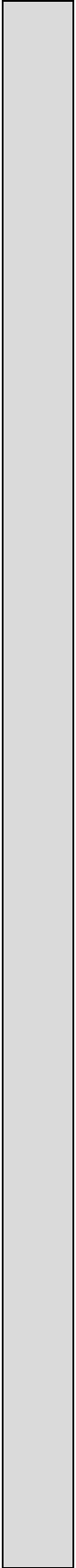
4. Enter the 4-digit code in the configuration menu at the top (Fig. 7/5):
 - Rotate the turn-push knob until the required field is reached.
 - Press the turn-push knob, then rotate to set the value.
 - Press again to save the value. Alternatively, use the diagnosis plug!

5. In the configuration menu at the bottom (Fig. 7/6), set the value of the option and save by pressing the turn-push knob. After confirming the last digit, OK? appears. Press the turn-push knob again to save the value. Saved value is displayed in green.
 - If the value is not to be saved, exit menu using the return key (Fig. 7/7).

Pre-sweep suction unit preparation

1.10 Tightening torque according to DIN 46200

Connecting thread	Brass (Nm)
M5	2
M6	3
M8	6
M10	10
M12	14
M14	19
M16	25
M20	36
M24	50





Clean ahead

Advanced Technology for a Cleaner, Better Environment



Hako GmbH · Head Office · Hamburger Str. 209-239 · 23843 Bad Oldesloe, Germany
Phone +49 4531 806-0 · Fax +49 4531 806-338